

THINK STRETCH

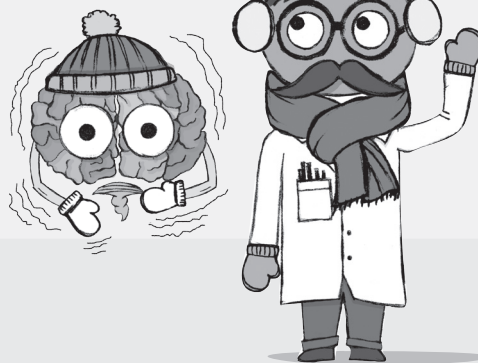
STOP WINTER BRAIN FREEZE

Help Brain and Professor have winter fun!

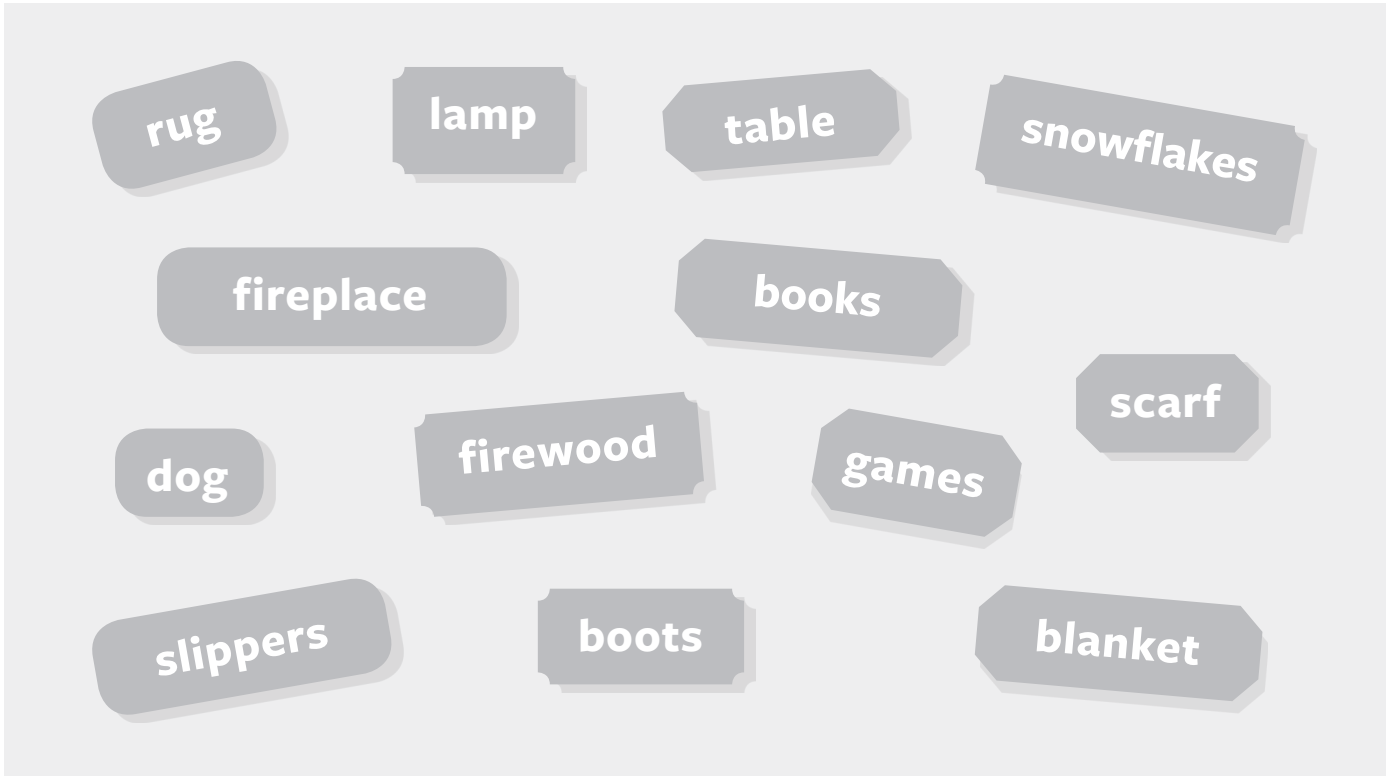
For every day you read, add an item to the snow globe.

GRADE

K



Read for at least **20** minutes, then fill in your book's title and add an item to the snow globe.



DAY 1 _____

DAY 6 _____

DAY 2 _____

DAY 7 _____

DAY 3 _____

DAY 8 _____

DAY 4 _____

DAY 9 _____

DAY 5 _____

DAY 10 _____

Missing Numbers

Write the missing numbers in each row.

A 1 2 ___ 4 5 6 ___ 8 ___ ___ 11

B 11 12 13 ___ 15 ___ 17 18 ___ 20

C 38 39 ___ ___ 42 43 ___ ___ ___

D 72 ___ ___ 75 76 ___ ___ ___ 80

E ___ 64 65 66 ___ 68 ___ ___ 71

F 49 50 ___ ___ ___ 54 55 56 ___

G 13 ___ ___ ___ ___ 18 19 ___ ___

H 24 25 ___ 27 ___ ___ ___ 31 ___

I ___ 55 56 ___ ___ ___ 60 ___ ___

J ___ ___ ___ 84 85 86 ___ 88 ___

Addition



In math, **+** means to put the numbers together.

$3 + 2 = \underline{\quad}$

$3 + 1 = \underline{\quad}$

$5 + 2 = \underline{\quad}$

$4 + 3 = \underline{\quad}$

$1 + 3 = \underline{\quad}$

$2 + 2 = \underline{\quad}$

$0 + 3 = \underline{\quad}$

$2 + 5 = \underline{\quad}$

$9 + 1 = \underline{\quad}$

$4 + 2 = \underline{\quad}$

$5 + 5 = \underline{\quad}$

$0 + 2 = \underline{\quad}$

$6 + 1 = \underline{\quad}$

$3 + 4 = \underline{\quad}$

$6 + 2 = \underline{\quad}$

$4 + 3 = \underline{\quad}$

$1 + 8 = \underline{\quad}$

$4 + 4 = \underline{\quad}$

$2 + 3 = \underline{\quad}$

$1 + 3 = \underline{\quad}$

$4 + 2 = \underline{\quad}$

$3 + 3 = \underline{\quad}$

$1 + 3 = \underline{\quad}$

$2 + 2 = \underline{\quad}$

$3 + 0 = \underline{\quad}$

$3 + 1 = \underline{\quad}$

$0 + 4 = \underline{\quad}$

$4 + 2 = \underline{\quad}$

$3 + 3 = \underline{\quad}$

$2 + 1 = \underline{\quad}$

$4 + 4 = \underline{\quad}$

$0 + 5 = \underline{\quad}$

$6 + 2 = \underline{\quad}$



Make a list of your favorite foods to eat when it is cold outside.

Handwriting practice area consisting of ten sets of horizontal lines. Each set includes a solid top line, a dashed middle line, and a solid bottom line.

DRAW HERE!

A large rectangular area for drawing, enclosed by a thick gray border with black corner tabs.

Snowman Parade



BONUS ACTIVITY



Choose items from the box.



Make a snowman.



Bring your snowman, snow girl or snow dog to school.

Will it be the craziest, most colorful, or fuzziest in the Snowman Parade?

| | | |
|---------------------|---------------------|-------------------|
| PRETZELS | OLD CDS | TOOTHPICKS |
| COTTON BALLS | MARSHMALLOWS | BALLOONS |
| PAPER PLATES | PAPER | WHITE SOCK |
| BUTTONS | CRAYONS | CANS |

EXPLORE COULD YOU STOP A SNOWMAN FROM MELTING?

Take three ice cubes and put one on a plate by itself. Next, wrap the other two ice cubes in different materials such as; aluminum foil, wax paper, saran wrap, scotch tape or newspaper. Place the wrapped ice cubes on a plate.

Which ice cube took the longest to melt?

What did you wrap your ice cubes in?

How long do you think a snowman would last indoors?